

| Big 12 | 1995 | 1996 | 1997 | 1998 | 1999 | 2000 | 2001 | 2002 | 2003 | 2004 | 2005 | 2006 |
|--------|------|------|------|------|------|------|------|------|------|------|------|------|
|--------|------|------|------|------|------|------|------|------|------|------|------|------|

Baylor



| | | | | | | | | | | | | |
|-----------------------------|-------|-------|-------|-------|-------|-------|-------|-------|-------|-------|-------|--------|
| Intl Undergraduate | 163 | 165 | 178 | 187 | 215 | 216 | 230 | 217 | 188 | 183 | 192 | 194 |
| Intl Grad/Pro | 132 | 136 | 124 | 125 | 125 | 146 | 173 | 189 | 210 | 214 | 196 | 199 |
| Intl Total | 295 | 301 | 302 | 312 | 340 | 362 | 403 | 406 | 398 | 397 | 388 | 393 |
| Total Undergraduate | 10323 | 10500 | 10597 | 11124 | 11472 | 11806 | 12190 | 11987 | 11712 | 11580 | 11825 | 11,831 |
| Total Graduate/Professional | 1711 | 1756 | 1751 | 1741 | 1749 | 1815 | 1928 | 2060 | 2110 | 2112 | 2031 | 2,209 |
| Total Enrollment | 12034 | 12256 | 12348 | 12865 | 13221 | 13621 | 14118 | 14047 | 13822 | 13692 | 13856 | 14,040 |
| Percent Intl/Tot | 2.5 | 2.5 | 2.4 | 2.4 | 2.6 | 2.7 | 2.9 | 2.9 | 2.9 | 2.9 | 2.8 | 2.8 |
| Percent Intl/Ugrad Tot | 1.6 | 1.6 | 1.7 | 1.7 | 1.9 | 1.8 | 1.9 | 1.8 | 1.6 | 1.6 | 1.6 | 1.6 |
| Percent Intl/Grad Tot | 7.7 | 7.7 | 7.1 | 7.2 | 7.1 | 8.0 | 9.0 | 9.2 | 10.0 | 10.1 | 9.7 | 9.1 |

Colorado-Boulder



| | | | | | | | | | | | | |
|-----------------------------|-------|-------|-------|-------|-------|-------|-------|-------|-------|-------|-------|-------|
| Intl Undergraduate | 463 | 454 | 441 | 433 | 395 | 342 | 329 | 341 | 324 | 368 | 341 | 379 |
| Intl Grad/Pro | 627 | 634 | 651 | 679 | 657 | 693 | 779 | 858 | 758 | 718 | 625 | 656 |
| Intl Total | 1090 | 1088 | 1092 | 1112 | 1052 | 1035 | 1108 | 1199 | 1082 | 1086 | 966 | 1035 |
| Total Undergraduate | 19637 | 19845 | 20437 | 20594 | 21216 | 21908 | 22547 | 23749 | 24817 | 24896 | 24601 | 24815 |
| Total Graduate/Professional | 4800 | 4777 | 4672 | 4530 | 4816 | 4679 | 4741 | 4895 | 5008 | 4859 | 4510 | 4580 |
| Total Enrollment | 24437 | 24622 | 25109 | 25124 | 26032 | 26587 | 27288 | 28644 | 29825 | 29755 | 29111 | 29395 |
| Percent Intl/Tot | 4.5 | 4.4 | 4.3 | 4.4 | 4.0 | 3.9 | 4.1 | 4.2 | 3.6 | 3.6 | 3.3 | 3.5 |
| Percent Intl/Ugrad Tot | 2.4 | 2.3 | 2.2 | 2.1 | 1.9 | 1.6 | 1.5 | 1.4 | 1.3 | 1.5 | 1.4 | 1.5 |
| Percent Intl/Grad Tot | 13.1 | 13.3 | 13.9 | 15.0 | 13.6 | 14.8 | 16.4 | 17.5 | 15.1 | 14.8 | 13.9 | 14.3 |

Iowa State University



| | | | | | | | | | | | | |
|-----------------------------|-------|-------|-------|-------|-------|-------|-------|-------|-------|-------|-------|-------|
| Intl Undergraduate | 1336 | 1154 | 1072 | 1058 | 997 | 1027 | 1099 | 1028 | 801 | 726 | 681 | 639 |
| Intl Grad/Pro | 1407 | 1352 | 1352 | 1287 | 1370 | 1397 | 1374 | 1455 | 1626 | 1513 | 1401 | 1474 |
| Intl Total | 2743 | 2506 | 2424 | 2345 | 2367 | 2424 | 2473 | 2483 | 2427 | 2239 | 2082 | 2113 |
| Total Undergraduate | 19941 | 20100 | 20717 | 21035 | 21503 | 22087 | 23060 | 22999 | 22230 | 21354 | 20732 | 20440 |
| Total Graduate/Professional | 4732 | 4799 | 4667 | 4550 | 4607 | 4758 | 4763 | 4899 | 5150 | 5026 | 5009 | 5022 |
| Total Enrollment | 24673 | 24899 | 25384 | 25585 | 26110 | 26845 | 27823 | 27898 | 27380 | 26380 | 25741 | 25462 |
| Percent Intl/Tot | 11.1 | 10.1 | 9.5 | 9.2 | 9.1 | 9.0 | 8.9 | 8.9 | 8.9 | 8.5 | 8.1 | 8.3 |
| Percent Intl/Ugrad Tot | 6.7 | 5.7 | 5.2 | 5.0 | 4.6 | 4.6 | 4.8 | 4.5 | 3.6 | 3.4 | 3.3 | 3.13 |
| Percent Intl/Grad Tot | 29.7 | 28.2 | 29.0 | 28.3 | 29.7 | 29.4 | 28.8 | 29.7 | 31.6 | 30.1 | 28.0 | 32.16 |

| Big 12 | 1995 | 1996 | 1997 | 1998 | 1999 | 2000 | 2001 | 2002 | 2003 | 2004 | 2005 | 2006 |
|--------|------|------|------|------|------|------|------|------|------|------|------|------|
|--------|------|------|------|------|------|------|------|------|------|------|------|------|

Kansas



| | | | | | | | | | | | | |
|-----------------------------|-------|-------|-------|-------|-------|-------|-------|-------|-------|-------|-------|-------|
| Intl Undergraduate | 929 | 862 | 762 | 680 | 738 | 710 | 739 | 698 | 635 | 637 | 561 | 668 |
| Intl Grad/Pro | 841 | 771 | 772 | 766 | 809 | 876 | 981 | 979 | 950 | 978 | 939 | 911 |
| Intl Total | 1770 | 1633 | 1534 | 1446 | 1547 | 1586 | 1720 | 1677 | 1585 | 1615 | 1500 | 1579 |
| Total Undergraduate | 18087 | 18141 | 18432 | 18701 | 18995 | 19698 | 19651 | 20213 | 20692 | 20887 | 20908 | 20822 |
| Total Graduate/Professional | 6949 | 6733 | 6676 | 6454 | 6411 | 6222 | 6131 | 6245 | 6122 | 6093 | 6026 | 5951 |
| Total Enrollment | 25036 | 24874 | 25108 | 25155 | 25406 | 25920 | 25782 | 26458 | 26814 | 26980 | 26934 | 26773 |
| Percent Intl/Tot | 7.1 | 6.6 | 6.1 | 5.7 | 6.1 | 6.1 | 6.7 | 6.3 | 5.9 | 6.0 | 5.6 | 5.9 |
| Percent Intl/Ugrad Tot | 5.1 | 4.8 | 4.1 | 3.6 | 3.9 | 3.6 | 3.8 | 3.5 | 3.1 | 3.0 | 2.7 | 3.2 |
| Percent Intl/Grad Tot | 12.1 | 11.5 | 11.6 | 11.9 | 12.6 | 14.1 | 16.0 | 15.7 | 15.5 | 16.1 | 15.6 | 15.3 |

Kansas State



| | | | | | | | | | | | | |
|-----------------------------|--------|--------|--------|--------|--------|--------|--------|--------|--------|--------|--------|--------|
| Intl Undergraduate | 289 | 194 | 181 | 222 | 193 | 225 | 260 | 251 | 230 | 234 | 253 | |
| Intl Grad/Pro | 764 | 698 | 682 | 708 | 758 | 795 | 834 | 873 | 840 | 795 | 701 | |
| Intl Total | 1091 | 938 | 887 | 970 | 978 | 1054 | 1154 | 1151 | 1099 | 1055 | 982 | 1047 |
| Total Undergraduate | 17,014 | 16,935 | 16,936 | 17,532 | 17,903 | 18,252 | 18,770 | 19,048 | 19,081 | 19,098 | 18,838 | 18,761 |
| Total Graduate/Professional | 3462 | 3390 | 3370 | 3353 | 3640 | 3677 | 3626 | 3714 | 3967 | 4053 | 4344 | 4,380 |
| Total Enrollment | 20,476 | 20,325 | 20,306 | 20,885 | 21,543 | 21,929 | 22,396 | 22,762 | 23,048 | 23,151 | 23,182 | 23,141 |
| Percent Intl/Tot | 5.3 | 4.6 | 4.4 | 4.6 | 4.5 | 4.8 | 5.2 | 5.1 | 4.8 | 4.6 | 4.2 | 4.5 |
| Percent Intl/Ugrad Tot | 1.7 | 1.1 | 1.1 | 1.3 | 1.1 | 1.2 | 1.4 | 1.3 | 1.2 | 1.2 | 1.3 | |
| Percent Intl/Grad Tot | 22.1 | 20.6 | 20.2 | 21.1 | 20.8 | 21.6 | 23.0 | 23.5 | 21.2 | 19.6 | 16.1 | |

Missouri



| | | | | | | | | | | | | |
|-----------------------------|-------|-------|-------|-------|-------|-------|-------|-------|-------|-------|--------|-------|
| Intl Undergraduate | 501 | 529 | 462 | 385 | 358 | 312 | 311 | 325 | 316 | 314 | 279 | 277 |
| Intl Grad/Pro | 938 | 854 | 833 | 767 | 842 | 921 | 1003 | 1080 | 1075 | 1075 | 1083 | 1122 |
| Intl Total | 1439 | 1383 | 1295 | 1152 | 1200 | 1233 | 1314 | 1405 | 1391 | 1389 | 1362 | 1399 |
| Total Undergraduate | 16784 | 17165 | 17346 | 17698 | 17811 | 18058 | 18431 | 19698 | 20441 | 20883 | 21,375 | 21551 |
| Total Graduate/Professional | 5529 | 5318 | 5154 | 5025 | 5087 | 5222 | 5235 | 6426 | 6364 | 6120 | 6610 | 6702 |
| Total Enrollment | 22313 | 22483 | 22500 | 22723 | 22898 | 23280 | 23666 | 26124 | 26805 | 27003 | 27,985 | 28253 |
| Percent Intl/Tot | 6.4 | 6.2 | 5.8 | 5.1 | 5.2 | 5.3 | 5.6 | 5.4 | 5.2 | 5.1 | 4.9 | 5.0 |
| Percent Intl/Ugrad Tot | 3.0 | 3.1 | 2.7 | 2.2 | 2.0 | 1.7 | 1.7 | 1.6 | 1.5 | 1.5 | 1.3 | 1.3 |
| Percent Intl/Grad Tot | 17.0 | 16.1 | 16.2 | 15.3 | 16.6 | 17.6 | 19.2 | 16.8 | 16.9 | 17.6 | 16.4 | 16.7 |

| Big 12 | 1995 | 1996 | 1997 | 1998 | 1999 | 2000 | 2001 | 2002 | 2003 | 2004 | 2005 | 2006 |
|--------|------|------|------|------|------|------|------|------|------|------|------|------|
|--------|------|------|------|------|------|------|------|------|------|------|------|------|

Nebraska



| | | | | | | | | | | | | |
|-----------------------------|-------|-------|-------|-------|-------|-------|-------|-------|-------|-------|-------|-------|
| Intl Undergraduate | 502 | 519 | 515 | 495 | 463 | 468 | 515 | 530 | 471 | 453 | 435 | 423 |
| Intl Grad/Pro | 717 | 740 | 748 | 737 | 797 | 804 | 910 | 959 | 918 | 907 | 858 | 855 |
| Intl Total | 1219 | 1259 | 1263 | 1232 | 1260 | 1272 | 1425 | 1489 | 1389 | 1360 | 1293 | 1278 |
| Total Undergraduate | 19000 | 18954 | 18246 | 17980 | 17804 | 17968 | 17985 | 18118 | 17851 | 17137 | 17037 | 17371 |
| Total Graduate/Professional | 4711 | 4933 | 4581 | 4428 | 4338 | 4300 | 4779 | 4870 | 4708 | 4655 | 4638 | 4735 |
| Total Enrollment | 24320 | 23887 | 22827 | 22408 | 22142 | 22268 | 22764 | 22988 | 22559 | 21792 | 21675 | 22106 |
| Percent Intl/Tot | 5.0 | 5.3 | 5.5 | 5.5 | 5.7 | 5.7 | 6.3 | 6.5 | 6.2 | 6.2 | 6.0 | 5.8 |
| Percent Intl/Ugrad Tot | 2.6 | 2.7 | 2.8 | 2.8 | 2.6 | 2.6 | 2.9 | 2.9 | 2.6 | 2.6 | 2.6 | 2.4 |
| Percent Intl/Grad Tot | 15.2 | 15.0 | 16.3 | 16.6 | 18.4 | 18.7 | 19.0 | 19.7 | 19.5 | 19.5 | 18.5 | 18.1 |

Oklahoma



| | | | | | | | | | | | | |
|-----------------------------|-------|-------|-------|-------|-------|-------|-------|-------|-------|-------|-------|--------|
| Intl Undergraduate | 1089 | 1046 | 941 | 930 | 872 | 851 | 758 | 731 | 718 | 652 | 601 | 811 |
| Intl Grad/Pro | 629 | 656 | 648 | 670 | 722 | 726 | 843 | 999 | 1055 | 968 | 818 | 874 |
| Intl Total | 1,718 | 1702 | 1589 | 1600 | 1594 | 1577 | 1601 | 1730 | 1773 | 1620 | 1419 | 1685 |
| Total Undergraduate | 15527 | 15732 | 16241 | 17537 | 17852 | 18243 | 20078 | 20848 | 18834 | 21924 | 19644 | 18,855 |
| Total Graduate/Professional | 4437 | 4294 | 4268 | 3531 | 3487 | 3379 | 3986 | 4229 | 3938 | 4254 | 4266 | 4202 |
| Total Enrollment | 19964 | 20026 | 20509 | 21068 | 21339 | 21622 | 28954 | 29896 | 25309 | 31134 | 23910 | 23057 |
| Percent Intl/Tot | 8.6 | 8.5 | 7.7 | 7.6 | 7.5 | 7.3 | 5.5 | 5.8 | 7.0 | 5.2 | 5.9 | 7.3 |
| Percent Intl/Ugrad Tot | 7.0 | 6.6 | 5.8 | 5.3 | 4.9 | 4.7 | 3.8 | 3.5 | 3.8 | 3.0 | 3.1 | 4.3 |
| Percent Intl/Grad Tot | 14.2 | 15.3 | 15.2 | 19.0 | 20.7 | 21.5 | 21.1 | 23.6 | 26.8 | 22.8 | 19.2 | 20.8 |

Oklahoma State U



| | | | | | | | | | | | | |
|-----------------------------|-------|-------|-------|-------|-------|-------|-------|-------|-------|-------|-------|-------|
| Intl Undergraduate | 1083 | 1089 | 1063 | 1001 | 872 | 772 | 806 | 826 | 842 | 761 | 680 | 586 |
| Intl Grad/Pro | 782 | 782 | 863 | 977 | 928 | 996 | 1158 | 1351 | 1393 | 1272 | 1086 | 1023 |
| Intl Total | 1865 | 1871 | 1926 | 1978 | 1800 | 1768 | 1964 | 2177 | 2235 | 2033 | 1766 | 1609 |
| Total Undergraduate | 14564 | 14640 | 14732 | 15508 | 16203 | 16659 | 17211 | 18043 | 18683 | 18789 | 18909 | 18737 |
| Total Graduate/Professional | 4561 | 4561 | 4618 | 4958 | 4884 | 4593 | 4661 | 4949 | 4888 | 4837 | 4552 | 4570 |
| Total Enrollment | 19125 | 19201 | 19350 | 20466 | 21087 | 21252 | 21872 | 22992 | 23571 | 23626 | 23461 | 23307 |
| Percent Intl/Tot | 9.8 | 9.7 | 10.0 | 9.7 | 8.5 | 8.3 | 9.0 | 9.5 | 9.5 | 8.6 | 7.5 | 6.9 |
| Percent Intl/Ugrad Tot | 7.4 | 7.4 | 7.2 | 6.5 | 5.4 | 4.6 | 4.7 | 4.6 | 4.5 | 4.1 | 3.6 | 3.1 |
| Percent Intl/Grad Tot | 17.1 | 17.1 | 18.7 | 19.7 | 19.0 | 21.7 | 24.8 | 27.3 | 28.5 | 26.3 | 23.9 | 22.4 |

| Big 12 | 1995 | 1996 | 1997 | 1998 | 1999 | 2000 | 2001 | 2002 | 2003 | 2004 | 2005 | 2006 |
|--------|------|------|------|------|------|------|------|------|------|------|------|------|
|--------|------|------|------|------|------|------|------|------|------|------|------|------|

Texas



| | | | | | | | | | | | | |
|-----------------------------|-------|-------|-------|-------|-------|-------|-------|-------|-------|-------|-------|--------|
| Intl Undergraduate | | 1111 | 1312 | 1244 | 1164 | 1375 | 1345 | 1428 | 1377 | 1293 | 1307 | 1335 |
| Intl Grad/Pro | | 2297 | 2369 | 2639 | 2820 | 2950 | 3198 | 3373 | 3334 | 3208 | 3239 | 3195 |
| Intl Total | 3772 | 3408 | 3681 | 3883 | 3984 | 4325 | 4543 | 4801 | 4711 | 4501 | 4546 | 4560 |
| Total Undergraduate | 35086 | 35789 | 36861 | 37203 | 37159 | 38162 | 38609 | 39661 | 38383 | 37377 | 36878 | 37,069 |
| Total Graduate/Professional | 12819 | 12219 | 11996 | 11703 | 11850 | 11834 | 12007 | 12600 | 13043 | 13000 | 12818 | 12669 |
| Total Enrollment | 47905 | 48008 | 48857 | 48906 | 49009 | 49996 | 50616 | 52261 | 51426 | 50377 | 49696 | 49738 |
| Percent Intl/Tot | 7.9 | 7.1 | 7.5 | 7.9 | 8.1 | 8.7 | 9.0 | 9.2 | 9.2 | 8.9 | 9.1 | 9.2 |
| Percent Intl/Ugrad Tot | | 3.1 | 3.6 | 3.3 | 3.1 | 3.6 | 3.5 | 3.6 | 3.6 | 3.5 | 3.5 | 3.6 |
| Percent Intl/Grad Tot | | 18.8 | 19.7 | 22.5 | 23.8 | 24.9 | 26.6 | 26.8 | 25.6 | 24.7 | 25.3 | 25.2 |

Texas A&M



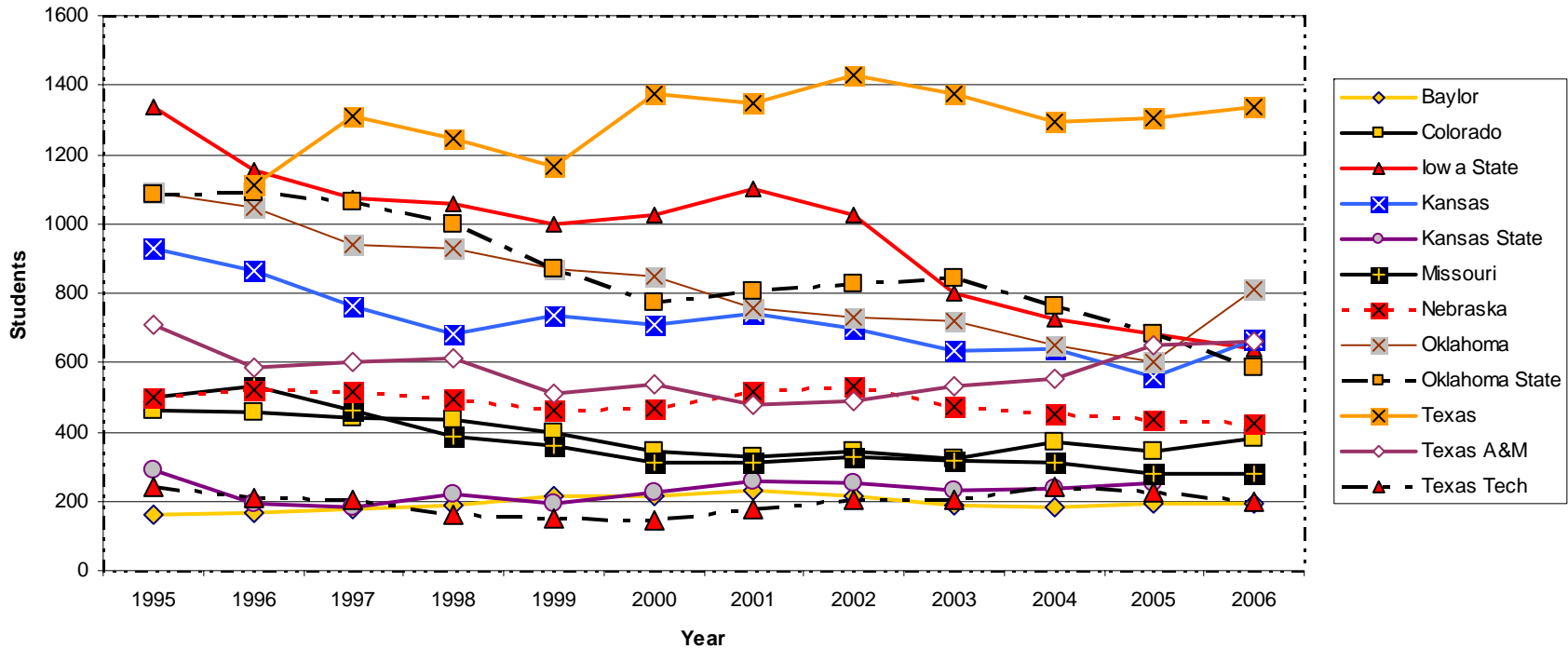
| | | | | | | | | | | | | |
|-----------------------------|-------|-------|-------|-------|-------|-------|-------|-------|-------|-------|-------|-------|
| Intl Undergraduate | 710 | 585 | 603 | 612 | 510 | 539 | 480 | 488 | 530 | 553 | 647 | 659 |
| Intl Grad/Pro | 1826 | 1779 | 2023 | 2111 | 2330 | 2749 | 2936 | 3132 | 3196 | 3081 | 2862 | 3080 |
| Intl Total | 2536 | 2364 | 2626 | 2723 | 2840 | 3288 | 3416 | 3620 | 3726 | 3634 | 3509 | 3739 |
| Total Undergraduate | 34371 | 34342 | 33945 | 35889 | 36077 | 36229 | 36603 | 36775 | 36066 | 35732 | 36066 | 36580 |
| Total Graduate/Professional | 7419 | 7550 | 7516 | 7500 | 7365 | 7797 | 8015 | 8308 | 8747 | 8703 | 8512 | 8800 |
| Total Enrollment | 41790 | 41892 | 41461 | 43389 | 43442 | 44026 | 44618 | 45083 | 44813 | 44435 | 44578 | 45380 |
| Percent Intl/Tot | 6.1 | 5.6 | 6.3 | 6.3 | 6.5 | 7.5 | 7.7 | 8.0 | 8.3 | 8.2 | 7.9 | 8.2 |
| Percent Intl/Ugrad Tot | 2.1 | 1.7 | 1.8 | 1.7 | 1.4 | 1.5 | 1.3 | 1.3 | 1.5 | 1.5 | 1.8 | 1.8 |
| Percent Intl/Grad Tot | 24.6 | 23.6 | 26.9 | 28.1 | 31.6 | 35.3 | 36.6 | 37.7 | 36.5 | 35.4 | 33.6 | 35.0 |

Texas Tech

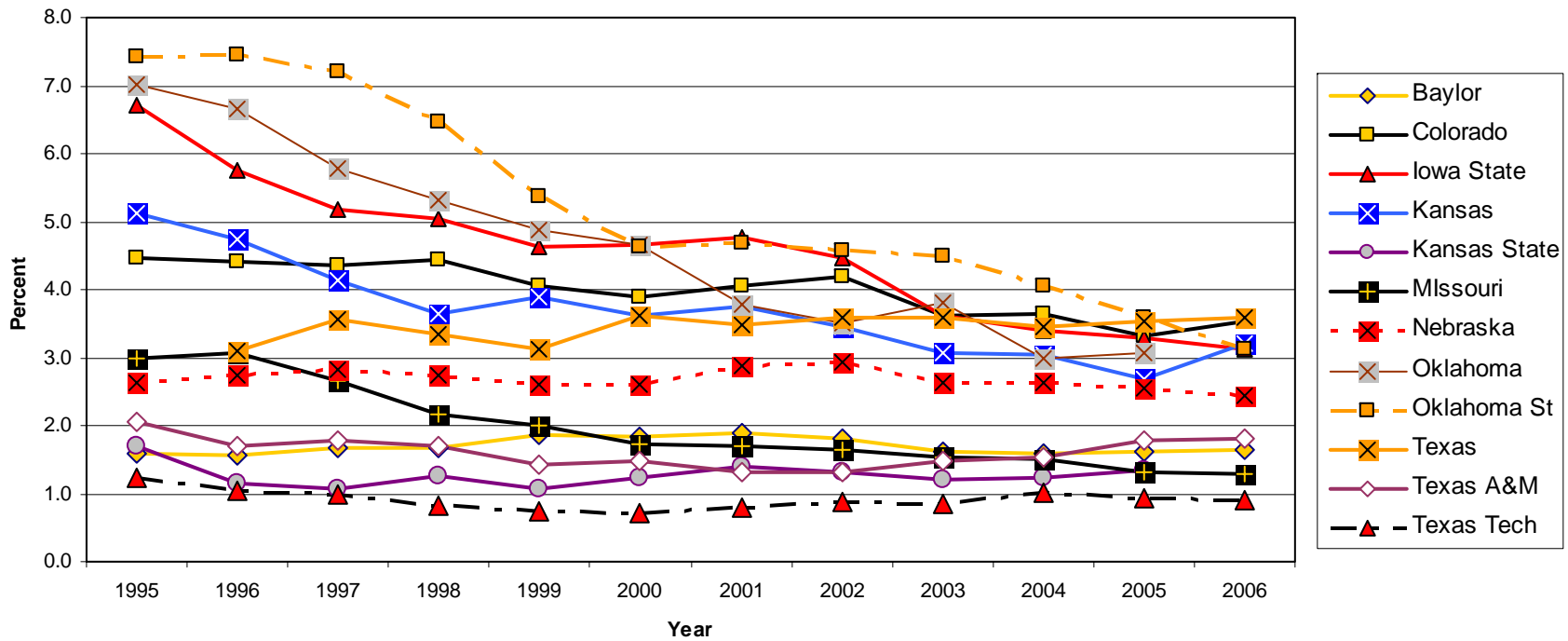


| | | | | | | | | | | | | |
|-----------------------------|-------|-------|-------|-------|-------|-------|-------|-------|-------|-------|-------|-------|
| Intl Undergraduate | 244 | 210 | 203 | 162 | 148 | 145 | 177 | 206 | 204 | 242 | 224 | 201 |
| Intl Grad/Pro | 633 | 589 | 597 | 611 | 655 | 699 | 795 | 902 | 978 | 899 | 851 | 873 |
| Intl Total | 877 | 799 | 800 | 773 | 803 | 844 | 972 | 1108 | 1182 | 1141 | 1075 | 1074 |
| Total Undergraduate | 19796 | 20420 | 20806 | 20024 | 20227 | 20518 | 21932 | 23470 | 24267 | 24014 | 23708 | 22851 |
| Total Graduate/Professional | 3766 | 3655 | 3580 | 3515 | 4022 | 4040 | 3641 | 4099 | 4282 | 4311 | 4293 | 5145 |
| Total Enrollment | 24185 | 24717 | 25022 | 24158 | 24249 | 24558 | 25573 | 27569 | 28549 | 28325 | 28001 | 27996 |
| Percent Intl/Tot | 3.6 | 3.2 | 3.2 | 3.2 | 3.3 | 3.4 | 3.8 | 4.0 | 4.1 | 4.0 | 3.8 | 3.9 |
| Percent Intl/Ugrad Tot | 1.2 | 1.0 | 1.0 | 0.8 | 0.7 | 0.7 | 0.8 | 0.9 | 0.8 | 1.0 | 0.9 | 0.9 |
| Percent Intl/Grad Tot | 16.8 | 16.1 | 16.7 | 17.4 | 16.3 | 17.3 | 21.8 | 22.0 | 22.8 | 20.9 | 19.8 | 17 |

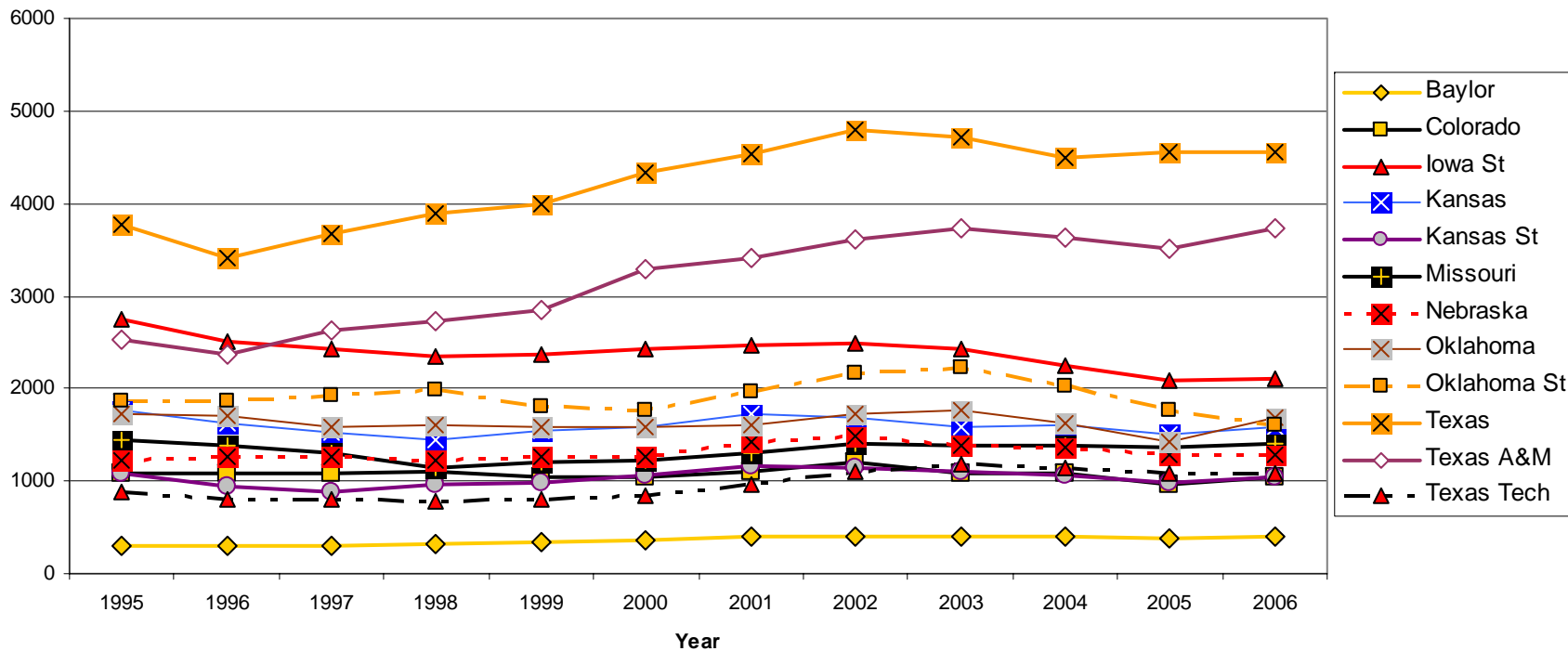
Big 12 - International UGRAD Student Enrollment - 1995-2006



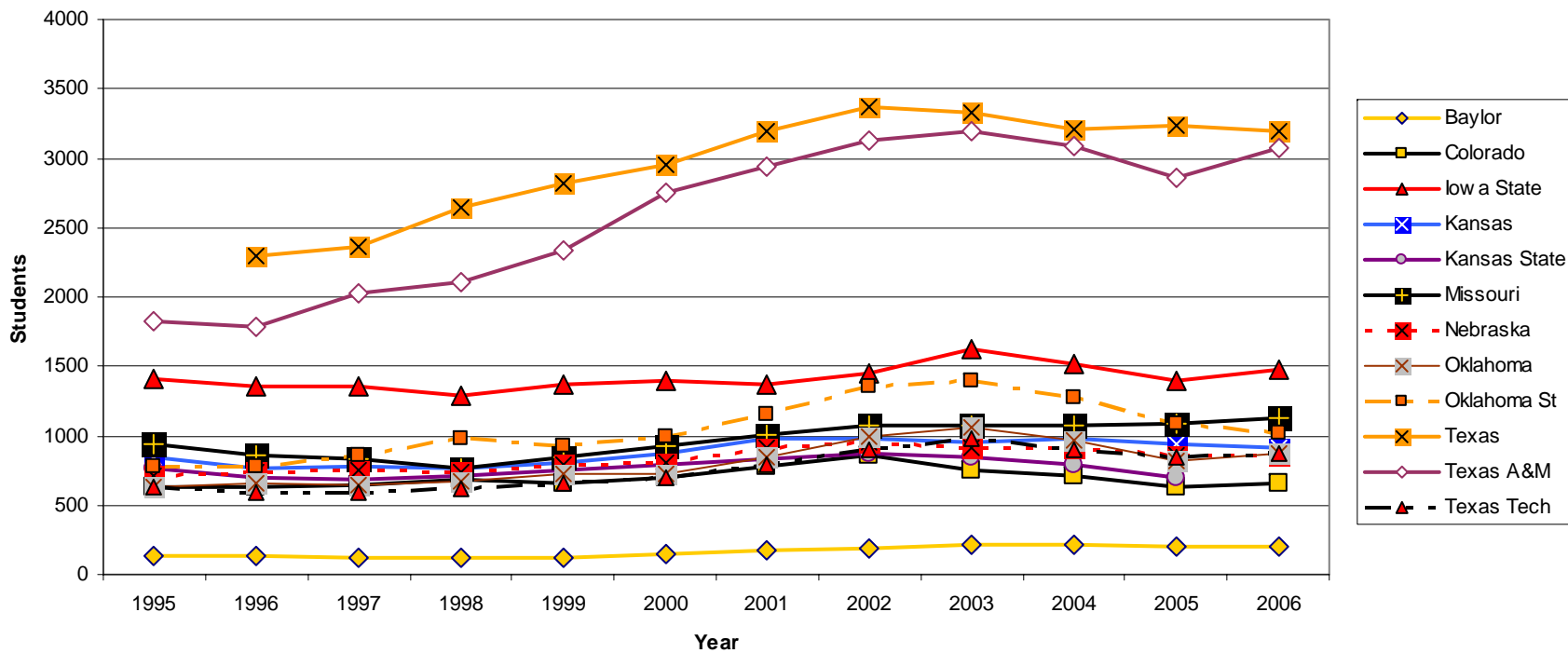
Big 12 - Intl UGRAD Student % of Total Ugrad Enrollment



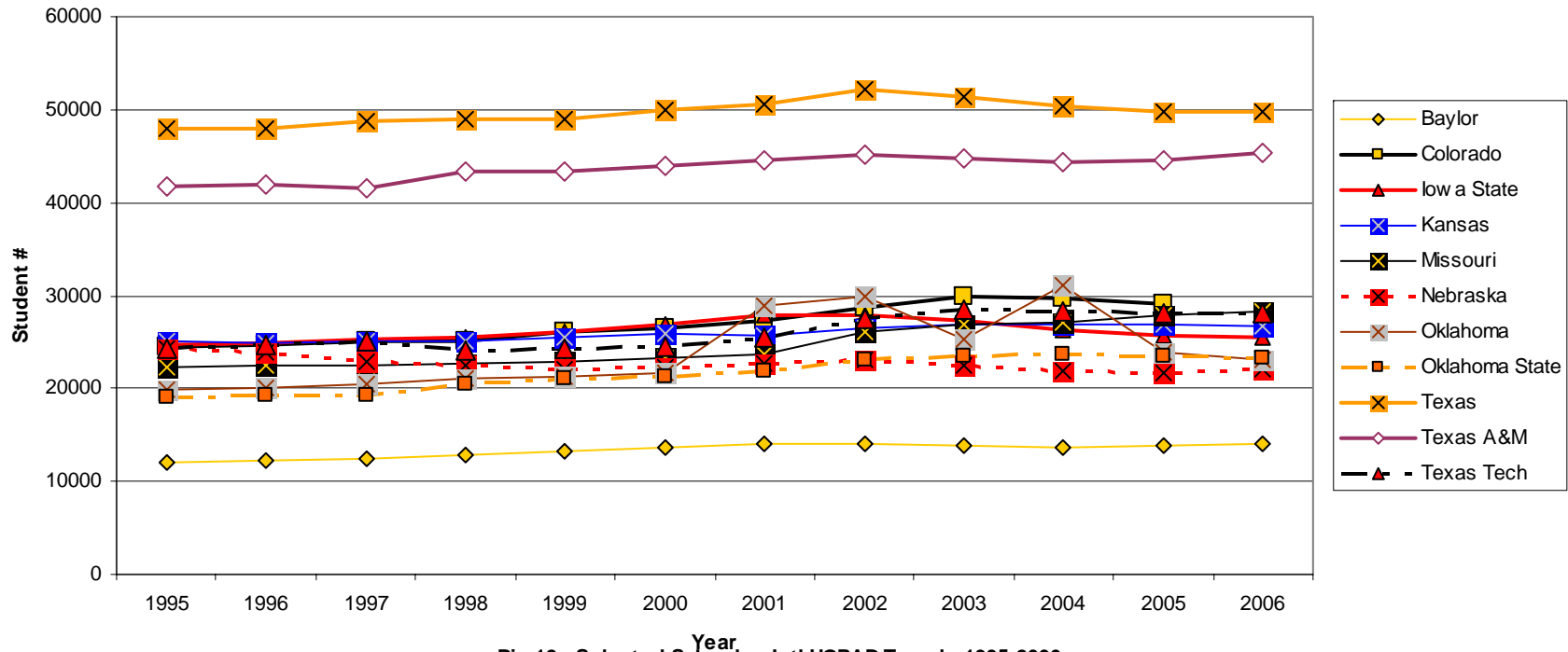
Big 12 - Total International Student Enrollment



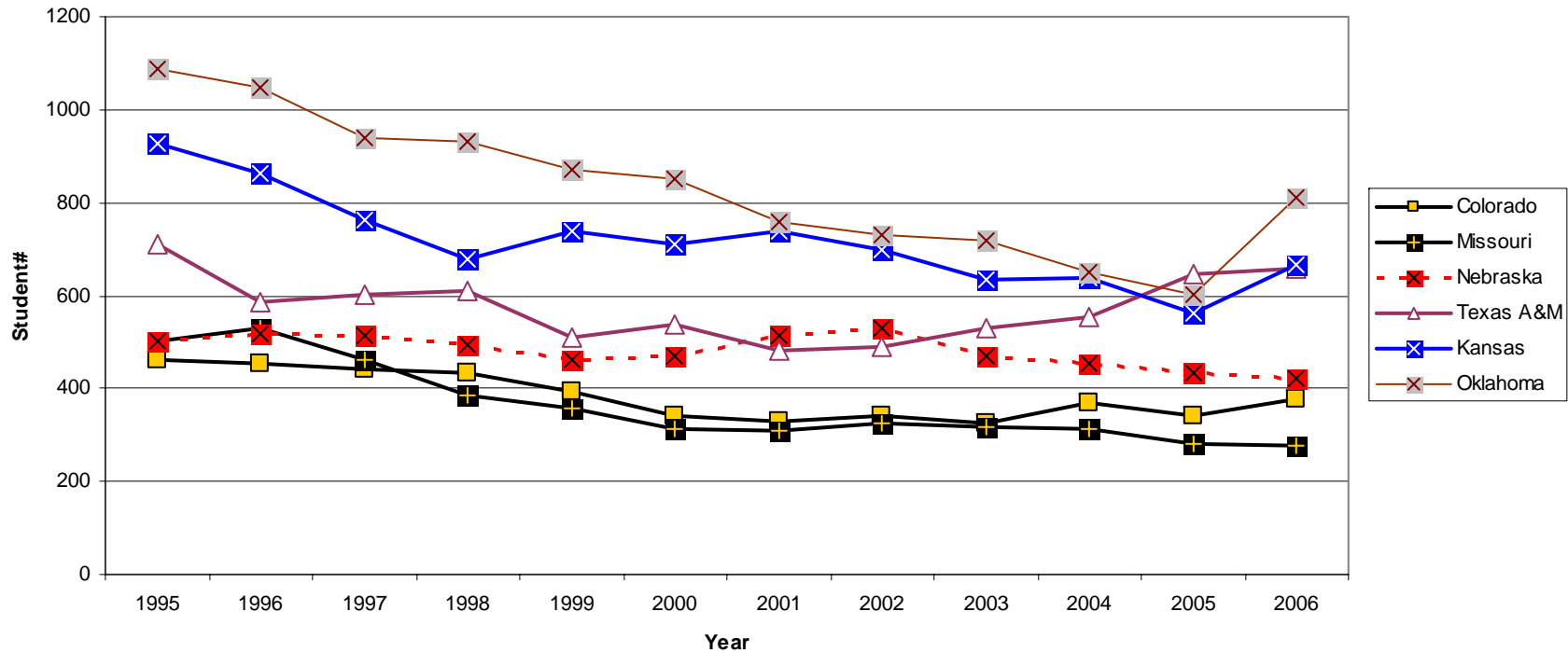
Big 12 - Intl Grad/Pro Student Enrollment



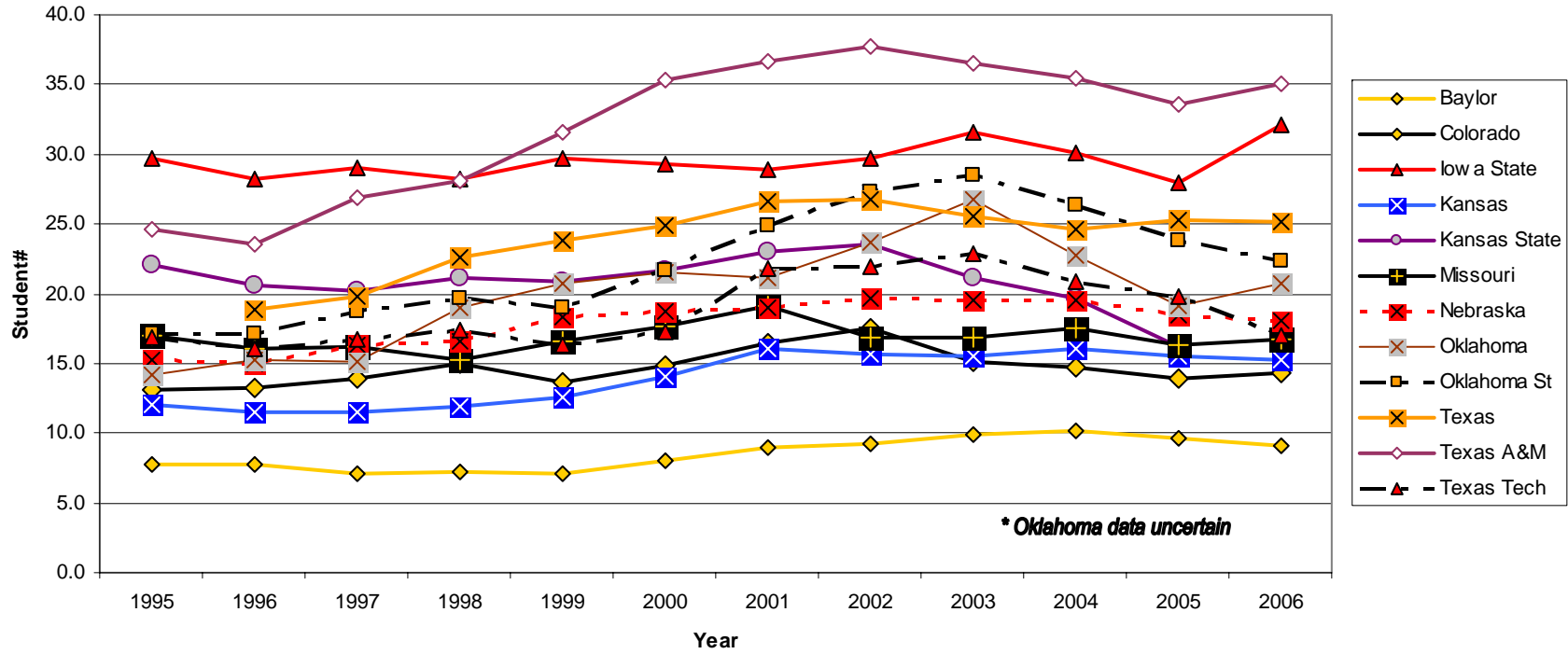
Big 12 - Total Enrollment 1995-2006



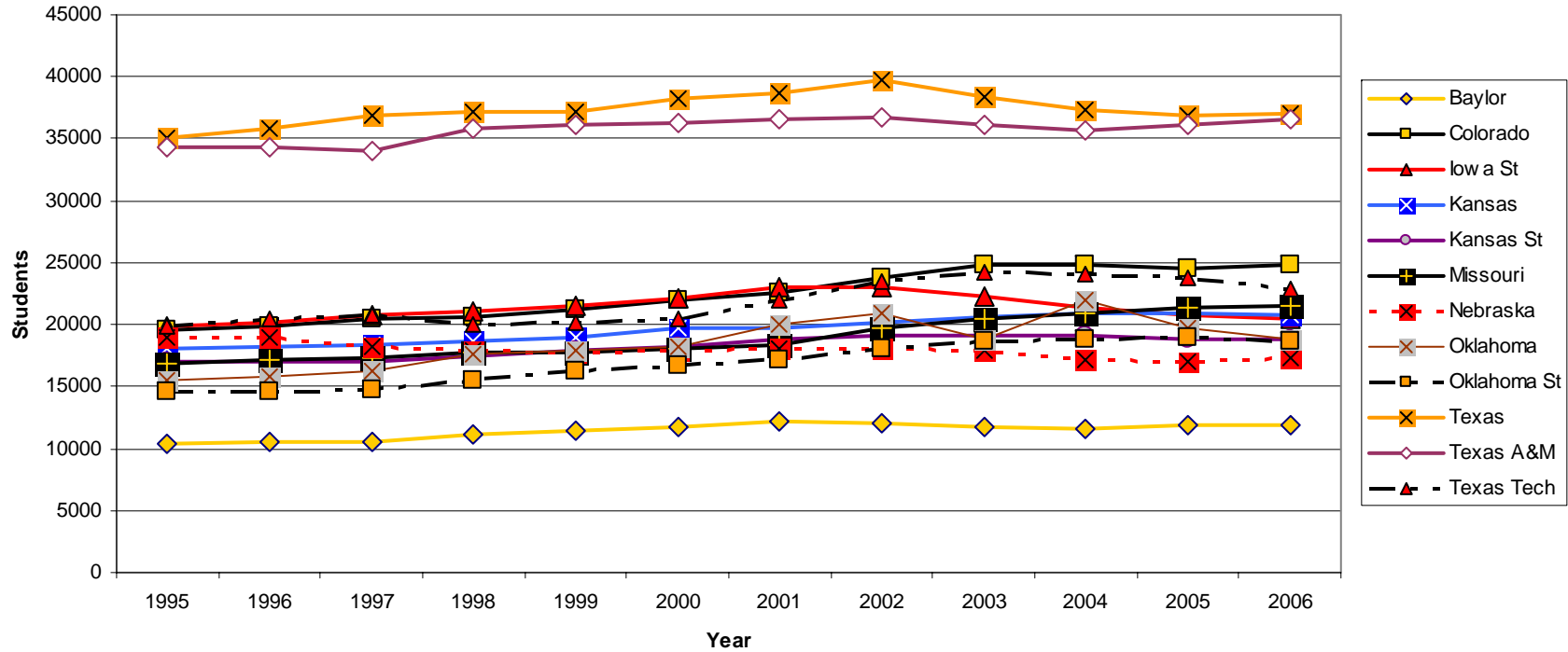
Big 12 - Selected Schools - Intl UGRAD Trends 1995-2006



Big 12 - Intl Grad % of Total Grad Enrollment 1995-2006

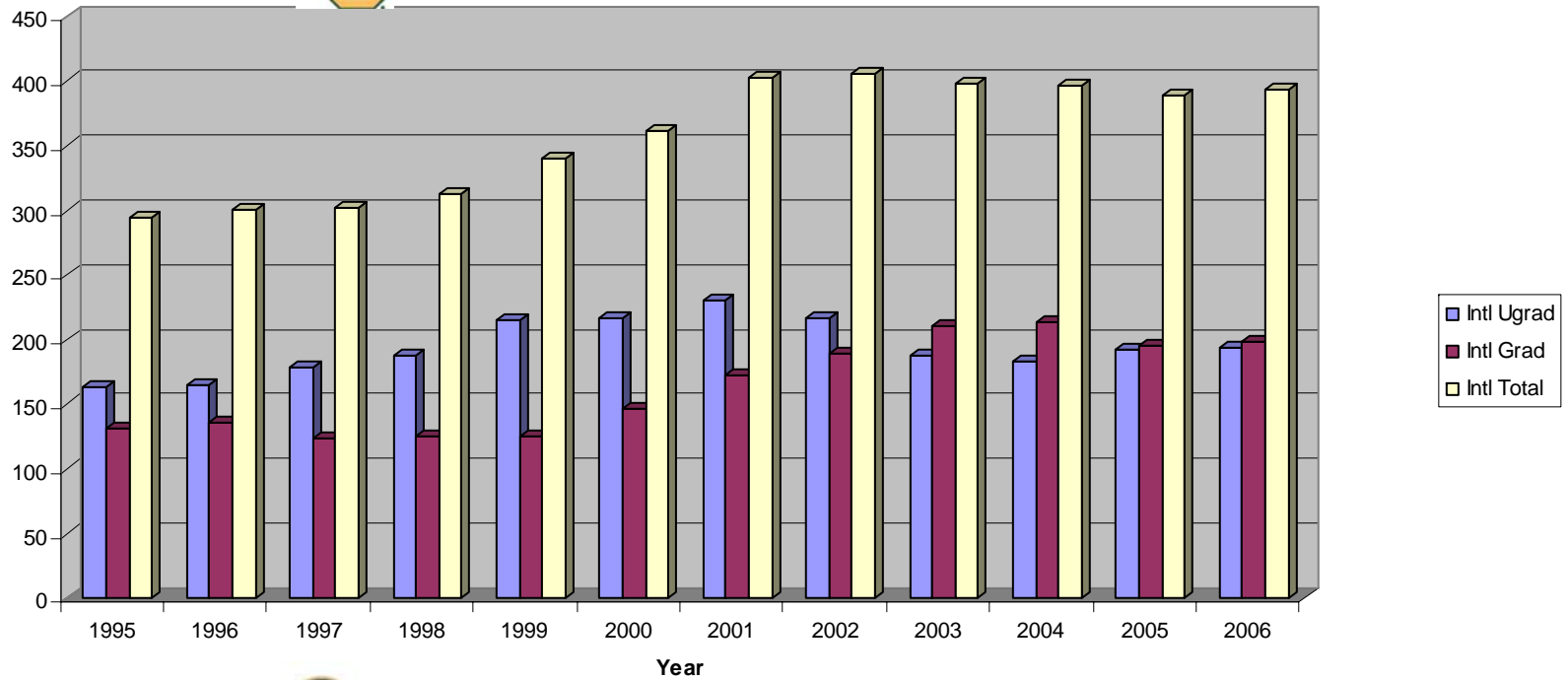


Big 12 - UGRAD Total Enrollment

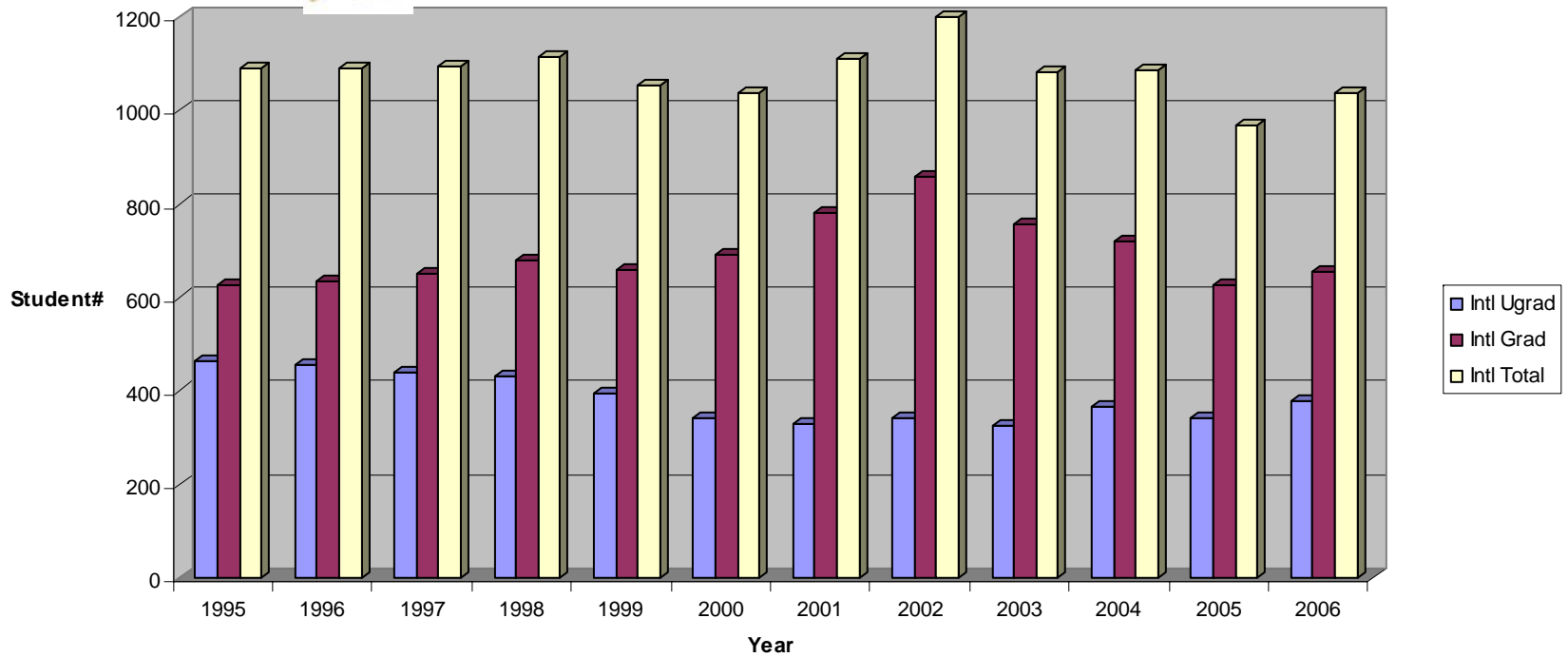




Baylor - Intl Student Enrollment 1995-2006

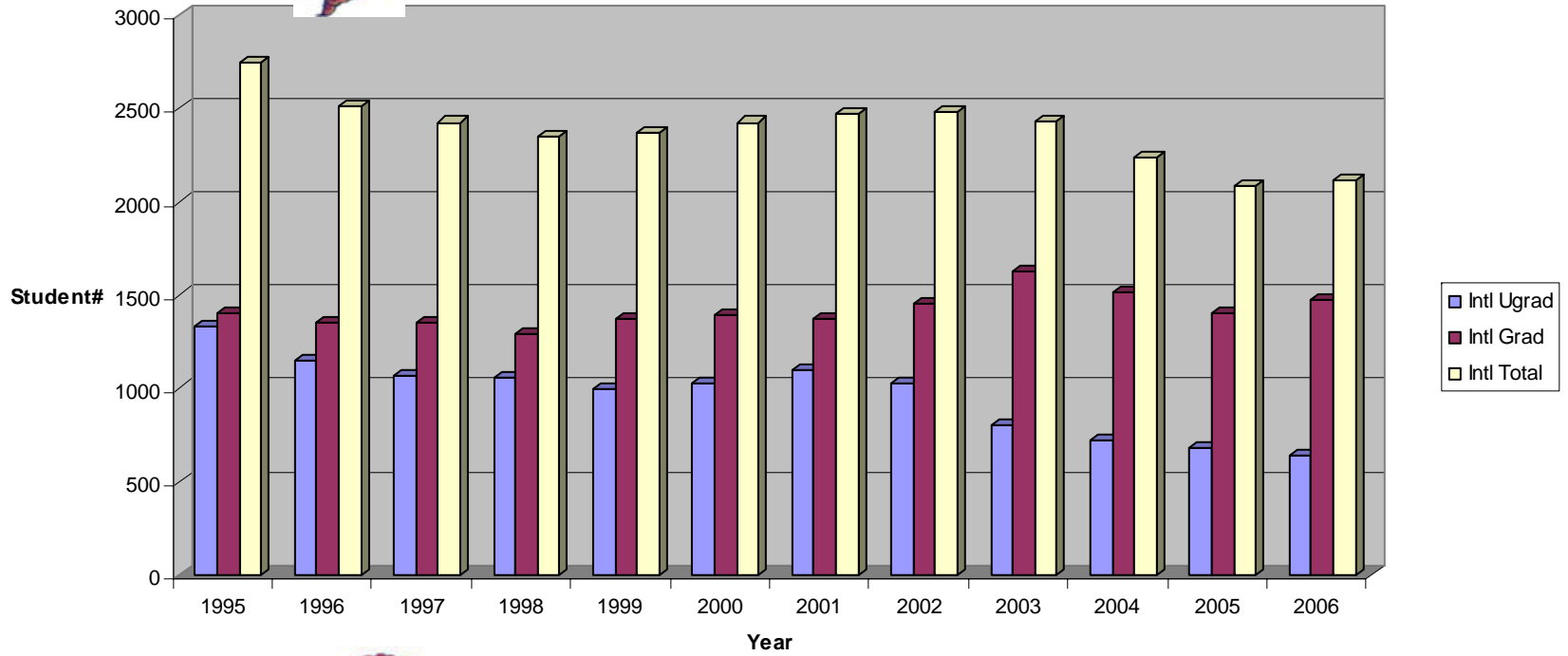


Colorado - Intl Student Enrollment 1995-2006

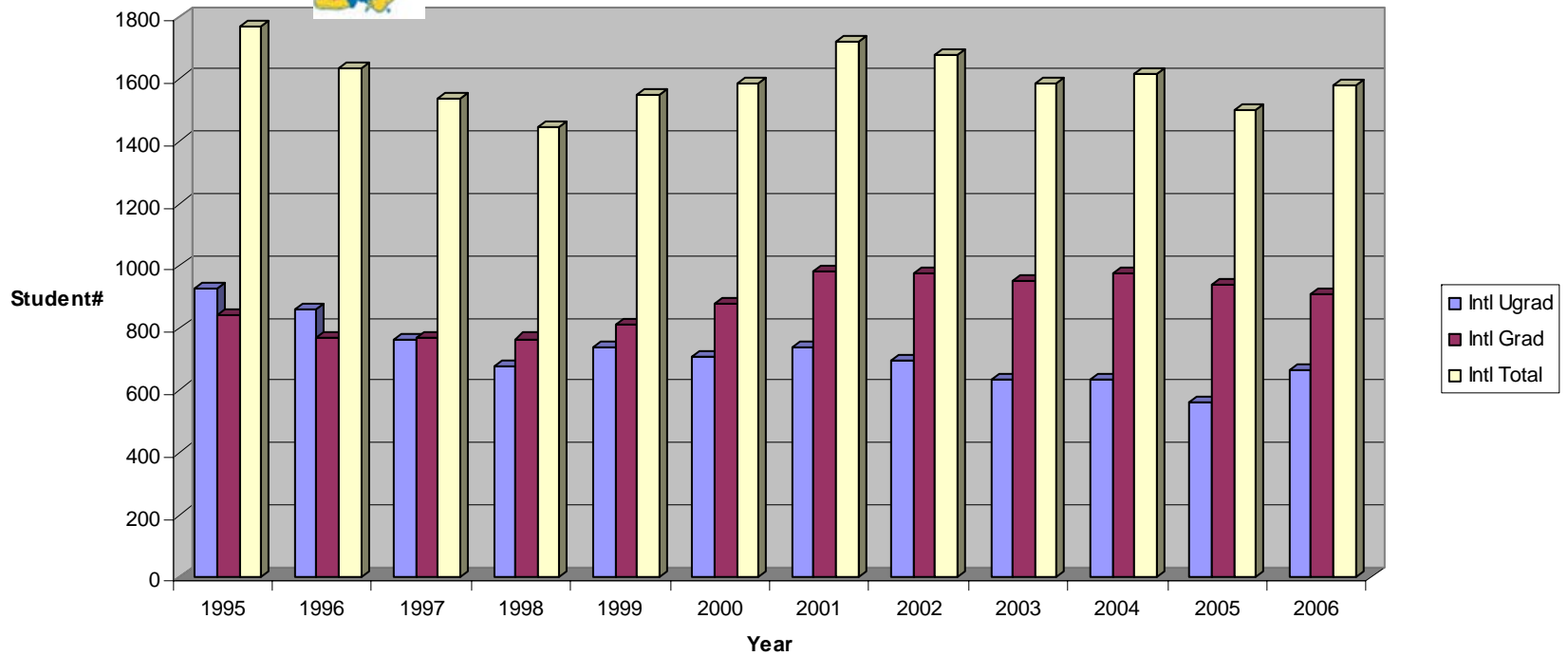




Iowa State - Intl Student Enrollment 1995-2006

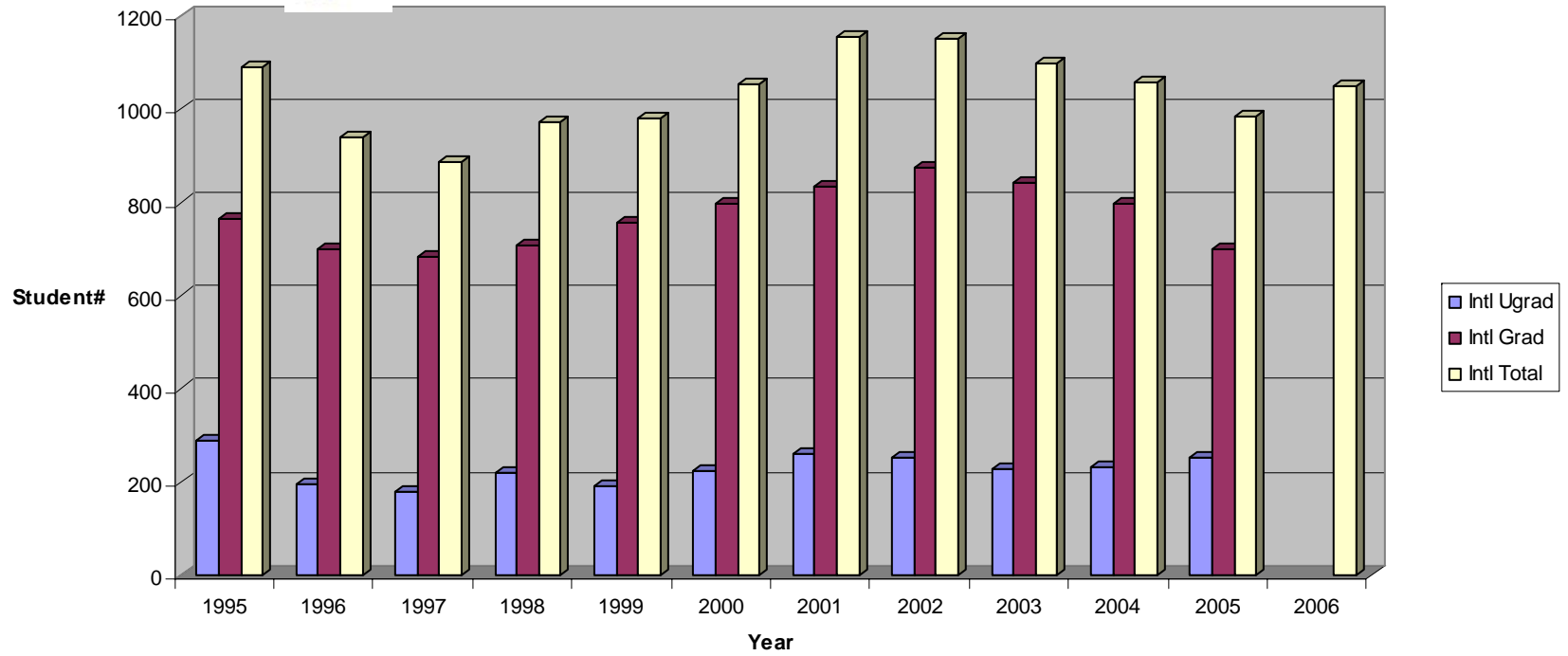


Kansas - Intl Student Enrollment 1995-2006

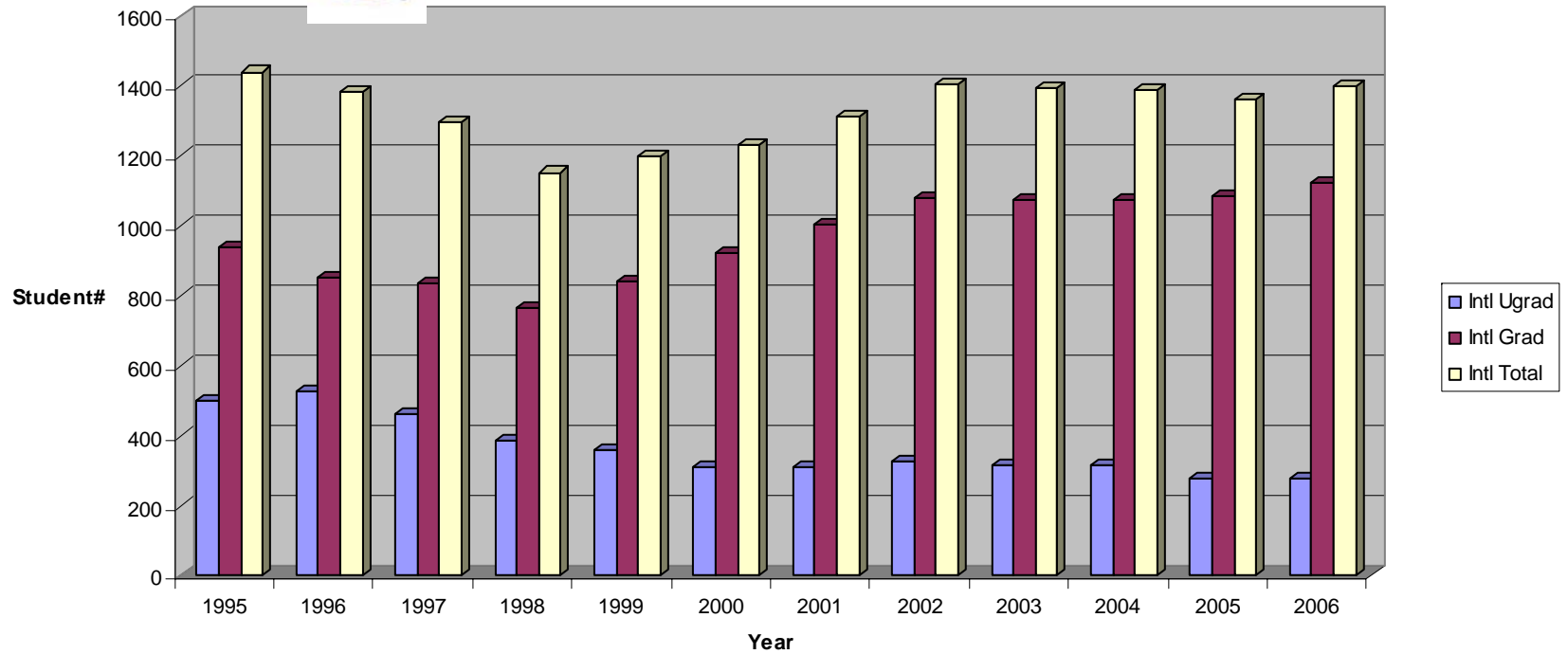




Kansas State - Intl Student Enrollment 1995-2006

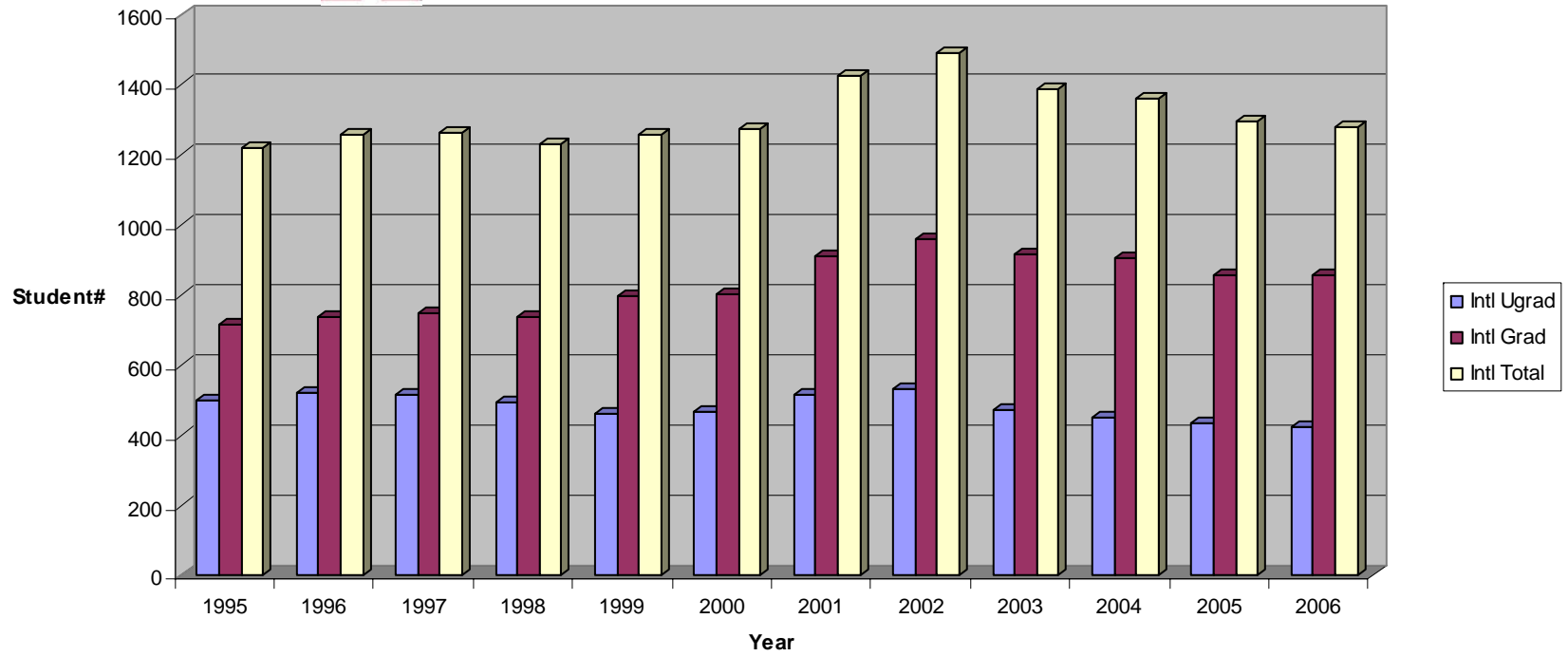


Missouri - Intl Student Enrollment 1995-2006

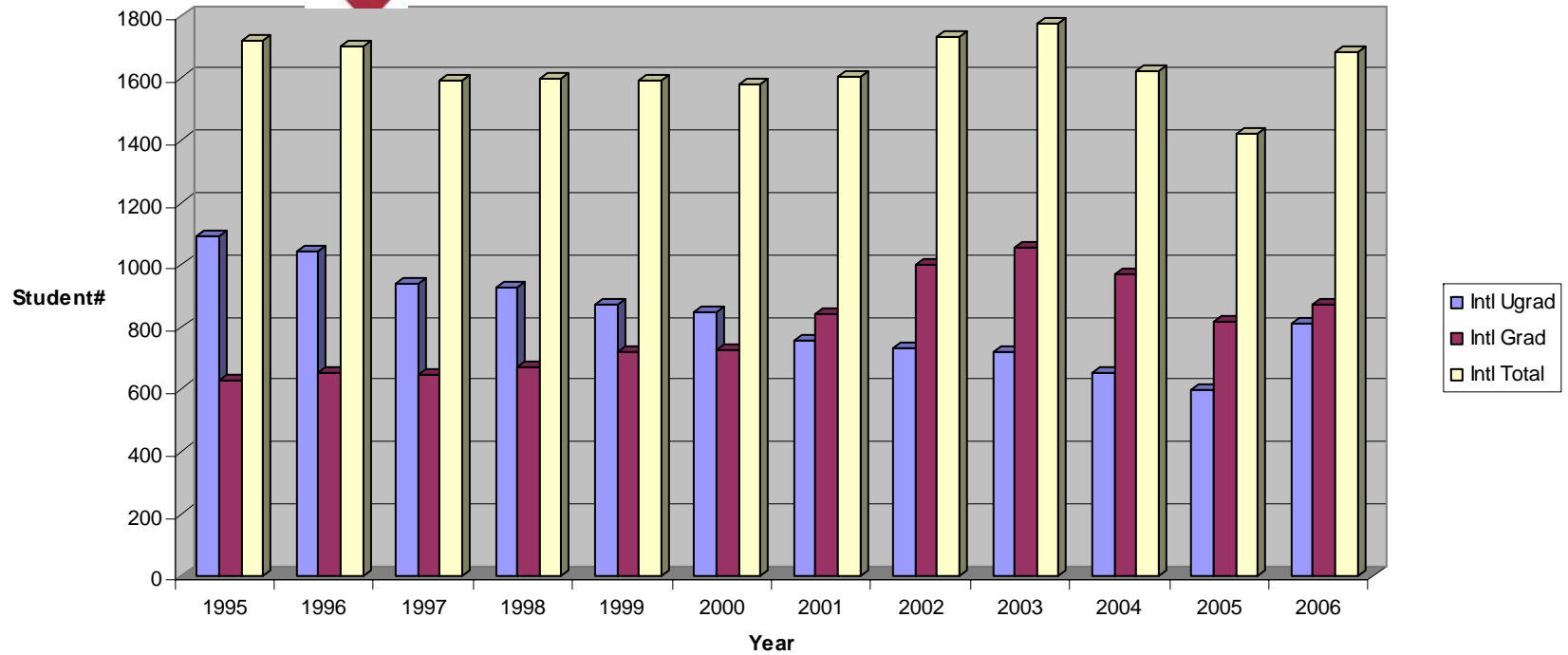




Nebraska - Intl Student Enrollment 1995-2006

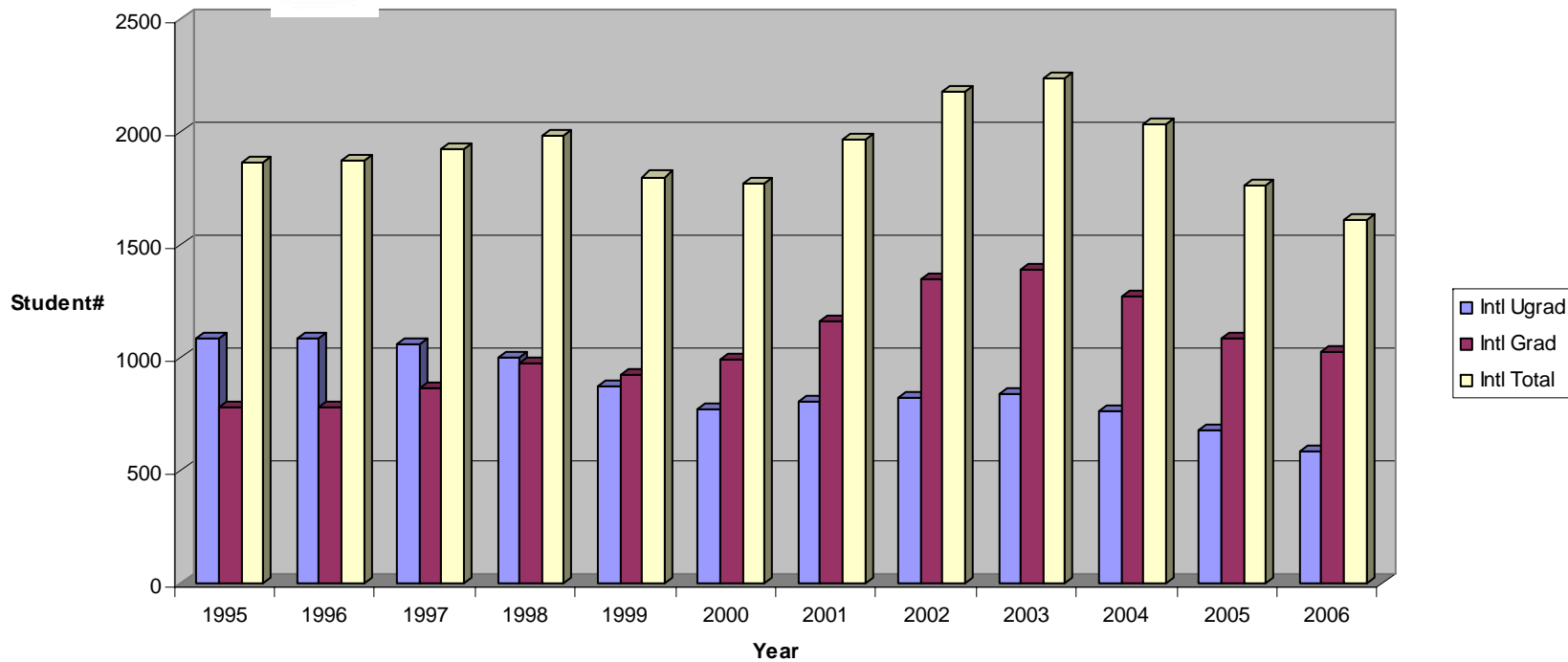


Oklahoma - Intl Student Enrollment 1995-2006

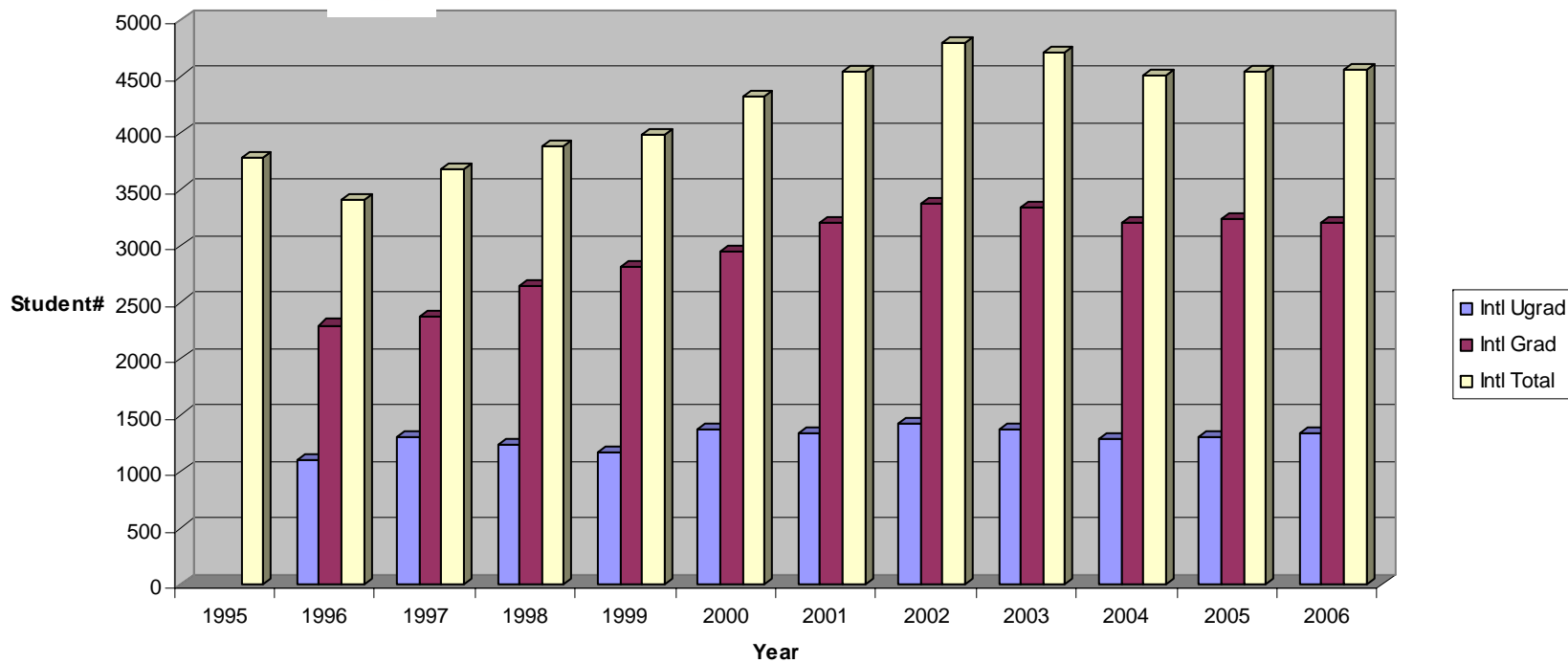




Oklahoma State - Intl Student Enrollment 1995-2006

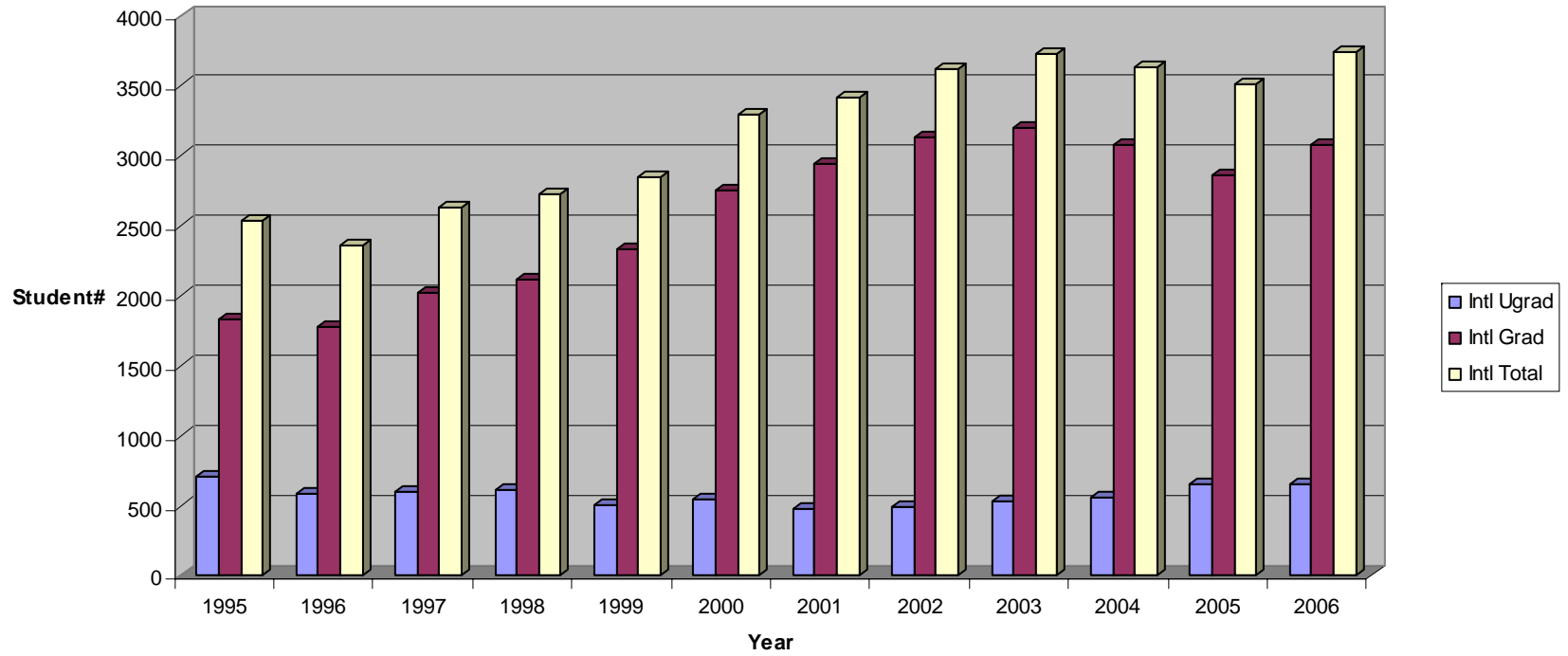


Texas - Intl Student Enrollment 1995-2006





Texas A&M - Intl Student Enrollment 1995-2006



Texas Tech - Intl Student Enrollment 1995-2006

